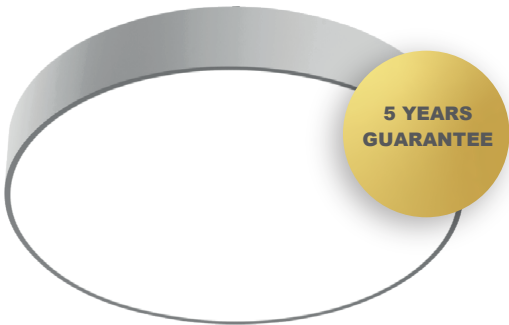


Spectrasol Sunround

LUMINAIRES FOR RECESSED AND SUSPENDED MOUNTING



LUMINAIRE DESCRIPTION

The patented Spectrasol linear LED luminaire will illuminate your interior with artificial light that has properties close to those of natural sunlight. Thanks to a balanced spectral composition (SPD) that positively influences the body's circadian rhythms through the non-image-forming (NIF) system of the eye, you will get biologically optimised full-spectrum lighting that supports overall health, physical and mental vitality and cognitive functions (cognitive performance and endurance, concentration, attention, quick thinking, ability to comprehend information, remember them and recall them from memory) indoors during the day.

Moreover, Spectrasol light fixtures do not emit concentrated energy in the short-wavelength blue part of the light spectrum, the so-called harmful blue light, which increases the risk of macular degeneration. On the contrary, Spectrasol actually regenerates the eyes by emitting energy in the red, photobiomodulating part of the light spectrum, which acts as a compensating factor for harmful blue light with both preventive and therapeutic effect.

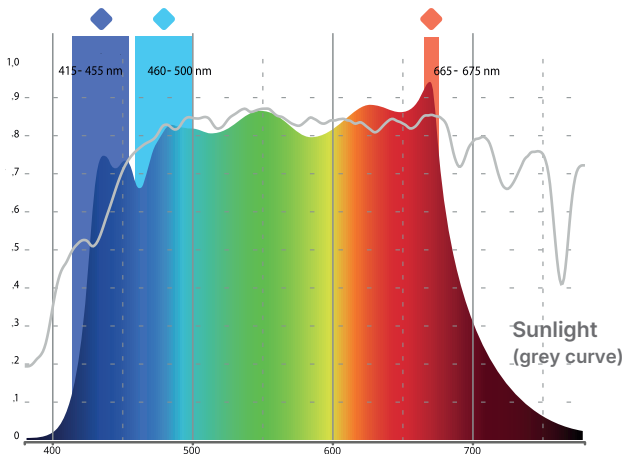
Spectrasol SunRound are elegant circular lamps designed as recessed or pendant luminaires. They are the ideal choice for modern interiors where cognitive performance, learning skills, attention, concentration and vitality need to be boosted.

TECHNICAL PARAMETERS

Lighting parameters	
Light distribution	direct
Optical system	micropism
UGR	<19 (depending on the mounting method)
CCT actual ¹	4800 K
CCT specific ²	5000 K
CRI	>95
DER mel (daily)	(D65)=0.87; (D50)=1
Flicker	flicker free
Calculated LED lifetime	L80B20 70.000h
Electrical parameters	
Power supply	220-240 V 50-60 Hz
Connection	screwless terminal block inside luminaire
Control options	ON/OFF, DALI, SWITCH DIM
Mechanical parameters	
Body	aluminium
finish	powder-coating white RAL 9003 powder-coating black RAL 9005 powder coating silver TIGER 09/90530
Luminaire protection	IP20
Packaging	Cardboard box

¹actual CCT in a typical illuminated room
²specific CCT luminaires (spherical integrator)
tolerance on photometric quantities ±10%

SPECTRASOL SPECTRAL COMPOSITION VISUALISATION IN A TYPICAL ILLUMINATED SPACE AND DESCRIPTION OF ITS KEY REGIONS



- Harmful blue light suppressed**
Does not damage retinal cells
Does not emit concentrated energy in the harmful blue light risk region (415-455 nm)
- Procognitive – Circadian melanopic energy**
Supports the circadian system and the resulting cognitive performance, health and mood
Balanced energy in the cyan procognitive region (460-500 nm)
- Regenerative photobiomodulating energy**
Regenerates damaged retinal cells
Peak emission in the photobiomodulation red (~670 nm)



SUNROUND LUMINAIRE VARIANTS

Order code	Variant	LED type	Luminous flux of luminaire	EDImel (D65; D50)	Power input luminaire	Luminaire diameter d	Weight of luminaire
			[lm]	[lm]	[W]	[mm]	[kg]
1-S02-04-010	Spectrasol SR400 D WH	procognitive LED Spectrasol 5000 K CRI 95	3500	3045; 3500	49	400	
1-S02-04-011	Spectrasol SR400 D SR						
1-S02-04-012	Spectrasol SR400 D BK						
1-S02-04-013	Spectrasol SR600 D WH		5500	4785; 5500	72	600	
1-S02-04-014	Spectrasol SR600 D SR						
1-S02-04-015	Spectrasol SR600 D BK						
1-S02-04-016	Spectrasol SR850 D WH		10000	8700; 10000	133	850	
1-S02-04-017	Spectrasol SR850 D SR						
1-S02-04-018	Spectrasol SR850 D BK						
1-S02-04-001	Spectrasol SR400 D DALI WH	procognitive LED Spectrasol 5000 K CRI 95	3500	3045; 3500	49	400	
1-S02-04-002	Spectrasol SR400 D DALI SR						
1-S02-04-003	Spectrasol SR400 D DALI BK						
1-S02-04-004	Spectrasol SR600 D DALI WH		5500	4785; 5500	72	600	
1-S02-04-005	Spectrasol SR600 D DALI SR						
1-S02-04-006	Spectrasol SR600 D DALI BK						
1-S02-04-007	Spectrasol SR850 D DALI WH		10000	8700; 10000	133	850	
1-S02-04-008	Spectrasol SR850 D DALI SR						
1-S02-04-009	Spectrasol SR850 D DALI BK						

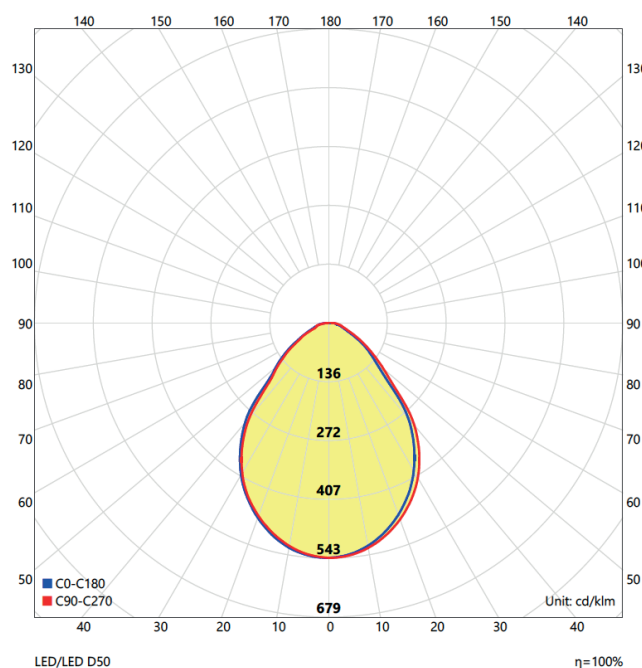
D – direct distribution

Tolerance on photometric quantities and power consumption of luminaire ±10%

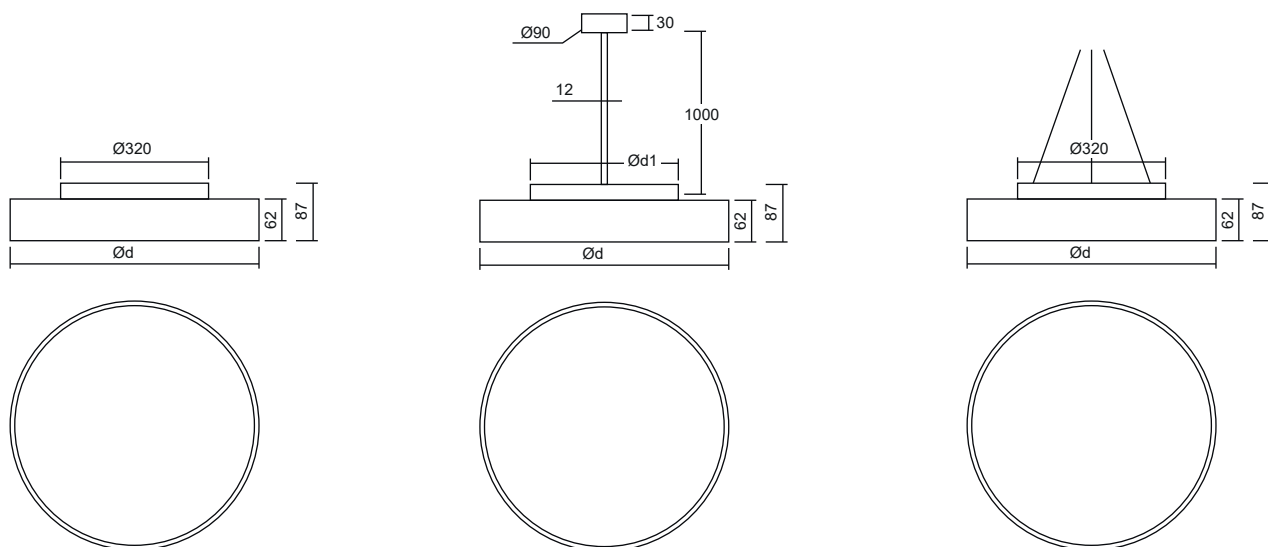
SUNROUND LUMINAIRE ACCESSORIES

Variant	Colour	Order code
Suspension set – three-point cable suspension 2 m	WH	1-P-HL-0006
	SR	1-P-HL-0007
	BK	1-P-HL-0008
Suspension set – three-point cable suspension 4 m	WH	1-P-HL-0003
	SR	1-P-HL-0004
	BK	1-P-HL-0005
Suspension set – fixed rod suspension 1 m	WH	1-P-HL-0009
	SR	1-P-HL-0010
	BK	1-P-HL-0011

LIGHTING DISTRIBUTION CHART



SUNROUND LUMINAIRE VARIANTS



D – direct distribution

Tolerance on photometric quantities and power consumption of luminaire $\pm 10\%$

LUMINAIRE VISUALISATION

